



HASTELLOY® X ALLOY

A nickel-base alloy with an exceptional combination of oxidation resistance, fabricability and high-temperature strength.

Contents

Principal Features	3
Creep and Stress-Rupture Strength	4
Tensile Properties	6
Physical Properties	10
Oxidation	14
Carburization	15
Health and Safety	15
Sales Office Addresses	16

PRINCIPAL FEATURES

Strong and Oxidation Resistance

HASTELLOY® X alloy is a nickel-chromium-iron-molybdenum alloy that possesses an exceptional combination of oxidation resistance, fabricability and high-temperature strength. It has also been found to be exceptionally resistant to stress-corrosion cracking in petrochemical applications. X alloy exhibits good ductility after prolonged exposure at temperatures of 1200, 1400, 1600°F (650, 760 and 870°C) for 16,000 hours.

Easily Fabricated

HASTELLOY X alloy has excellent forming and welding characteristics. It can be forged and, because of its good ductility, can be cold worked. X alloy can be welded by both manual and automatic methods including shielded metal arc (covered electrodes), gas tungsten arc (TIG) and gas metal arc (MIG). The alloy can also be resistance welded.

ASME Boiler and Pressure Vessel Code

HASTELLOY X alloy plate, sheet, strip, bar, tubing and pipe are covered by ASME specifications SB-435, SB-572, SB-619, SB-622 and SB-626 under UNS Number N06002.

Heat-Treatment

Wrought forms of HASTELLOY X alloy are furnished in the solution heat-treated condition unless otherwise specified. X alloy is solution heat-treated at 2150°F (1177°C) and rapid cooled. Bright annealed products are cooled in hydrogen.

Available in Convenient Forms

HASTELLOY X alloy is available in the form of plate, sheet, strip, billet, bar, wire, covered electrodes, pipe and tubing.

Useful for Aircraft, Furnace and Chemical Process Components

X alloy has wide use in gas turbine engines for combustion

zone components such as transition ducts, combustor cans, spray bars and flame holders as well as in afterburners, tailpipes and cabin heaters. It is recommended for use in industrial furnace applications because it has unusual resistant to oxidizing, reducing and neutral atmospheres. Furnace rolls of this alloy were still in good condition after operating for 8,700 hours at 2150°F (1177°C). HASTELLOY X alloy is also used in the chemical process industry for retorts, muffles, catalyst support grids, furnace baffles, tubing for pyrolysis operations and flash drier components.

Specifications

For information on specifications to which this alloy can be ordered, please contact one of the locations shown on the back cover of this brochure and ask for bulletin H-1034.

Nominal Chemical Composition, Weight Percent

Ni	Cr	Fe	Mo	Co	W	C	Mn	Si	B
47 ^a	22	18	9	1.5	0.6	0.10	1*	1*	0.008*

^aAs balance

*Maximum

CREEP AND STRESS-RUPTURE STRENGTH

Minimum Creep Rate Data, Sheet*

Test Temperature		Average Stress for Indicated Percent/Hour Minimum Creep Rate, Ksi (MPa)			
°F	°C	0.0001	0.001	0.01	0.1
1200	649	14.7 (101)	21.0 (145)	31.0 (214)	44.0 (303)
1400	760	7.2 (50)	10.0 (69)	14.0 (97)	19.5 (134)
1600	871	2.7 (19)	4.1 (28)	6.2 (43)	9.2 (63)
1800	982	0.7 (5)	1.3 (9)	2.2 (15)	3.7 (26)
2000	1093	-	-	-	0.9 (6)

* Solution heat-treated. Based on over 100 tests for sheet and over 150 tests for plate and bar.

Average Creep Data, Sheet*

Test Temperature		Creep, Percent	Approximate Initial Stress, Ksi (MPa) to Produce Specified Creep in:			
°F	°C		10 Hours	100 Hours	1,000 Hours	10,000 Hours
1200	649	0.5	40.0 (276)	27.0 (186)	17.5 (121)	-
		1.0	44.0 (303)	30.0 (207)	21.0 (145)	-
		2.0	48.0 (331)	33.0 (227)	22.5 (155)	-
1400	760	0.5	16.5 (114)	10.5 (72)	6.5 (45)	-
		1.0	19.0 (131)	13.0 (90)	9.0 (62)	6.2 (43)
		2.0	21.0 (145)	15.0 (103)	10.8 (74)	7.6 (52)
1600	871	0.5	7.8 (54)	4.9 (34)	3.1 (21)	-
		1.0	9.0 (62)	6.1 (42)	3.6 (25)	2.1** (14)
		2.0	10.5 (72)	7.2 (50)	4.3 (30)	2.3 (16)
1800	982	0.5	3.1 (21)	1.7 (12)	0.9 (6)	-
		1.0	3.6 (25)	1.9 (13)	1.0 (7)	-
		2.0	4.2 (29)	2.2 (15)	1.1 (8)	-
2000	1093	0.5	-	-	-	-
		1.0	0.8 (6)	-	-	-
		2.0	1.1 (8)	-	-	-

* Solution heat-treated. Based on over 100 tests.

** Extrapolated

Average Creep Data, Plate and Bar***

Test Temperature		Creep, Percent	Approximate Initial Stress, Ksi (MPa) to Produce Specified Creep in:			
°F	°C		10 Hours	100 Hours	1,000 Hours	10,000 Hours
1200	649	1.0	48.0 (331)	32.0 (220)	22.0 (151)	15 (103)
		5.0	64.0 (441)	43.0 (296)	29.0 (200)	20** (138)
1350	732	1.0	27.0 (186)	19.0 (131)	13.0 (89)	9 (62)
		5.0	34.0 (234)	24.0 (165)	16.5 (113)	11.5** (79)
1500	816	1.0	15.0 (103)	10.4 (71)	7.3 (50)	5.1 (35)
		5.0	18.0 (124)	13.0 (89)	9.0 (62)	6.2** (43)
1650	899	1.0	8.0 (55)	5.4 (37)	3.7 (25)	2.5 (17)
		5.0	10.5 (72)	6.8 (46)	4.2 (28)	2.8** (19)
1800	982	1.0	4.2 (28)	2.6 (17)	1.6 (11)	1.0** (7)
		5.0	5.4 (37)	3.3 (22)	2.0 (14)	-

** Extrapolated

*** Solution heat-treated. Based on over 90 tests for 1.0 percent creep and on over 60 tests for 5.0 percent creep.

Average Rupture Data, Sheet*

Test Temperature		Approximate Rupture Life Strength for Time Indicated, Ksi (MPa)			
°F	°C	10 Hours	100 Hours	1,000 Hours	10,000 Hours
1200	649	67.0 (462)	48.0 (331)	34.0 (170)	24.9 (170)
1400	760	32.0 (221)	22.5 (155)	15.8 (77)	11.1 (77)
1600	871	17.0 (117)	10.6 (73)	6.5 (28)	4.0 (28)
1800	982	6.5 (45)	3.7 (26)	2.1 (8)	1.2 (8)
2000	1093	2.4 (17)	1.2 (8)	0.6 (4)	-

* Solution heat-treated. Based on over 100 tests.

Average Rupture Data, Plate and Bar*

Test Temperature		Approximate Rupture Life Strength for Time Indicated, Ksi (MPa)			
°F	°C	10 Hours	100 Hours	1,000 Hours	10,000 Hours
1200	649	72.0 (496)	47.9 (330)	34.0 (234)	24.0 (165)
1350	732	36.0 (248)	25.0 (172)	18.0 (124)	12.5 (86)
1500	816	21.0 (145)	14.0 (96)	10.0 (69)	6.8 (47)
1650	899	12.0 (83)	7.5 (52)	4.7 (32)	3.0 (21)
1800	982	7.0 (48)	4.2 (29)	2.4 (17)	1.4 (10)
1950	1066	3.7 (26)	1.9 (13)	1.0** (7)	-
2100	1149	1.7 (12)	0.7 (5)	0.3** (2)	-

* Solution heat-treated. Based on over 100 tests for sheet and over 150 tests for plate and bar.

** Extrapolated

TYPICAL TENSILE PROPERTIES

Average Room Temperature Tensile Data*

Form	Condition	Ultimate Tensile Strength		Yield Strength at 0.2% Offset		Elongation in 2 in. (50.8 mm)
		Ksi	MPa	Ksi	MPa	%
Sheet, 0.091 to 0.312 in. (2.3 to 7.9mm) thick	Heat-treated at 2150°F (1177°C), Rapid Cooled	109.5	755	55.9	385	45
Plate, 3/8 to 2 in. (9.5 to 50.8mm) thick	Heat-treated at 2150°F (1177°C), Rapid Cooled	107.7	743	49.1	339	51

* Based on 58-69 tests.

Average Tensile Data*

Form	Condition	Test Temperature		Ultimate Tensile Strength		Yield Strength at 0.2% Offset		Elongation in 2 in. (50.8 mm)
		°F	°C	Ksi	MPa	Ksi	MPa	%
Sheet 0.045-0.060 in. (1.1-1.5 mm) thick	Bright Annealed at 2150°F (1177°C), Hydrogen Cooled	Room		111.2	767	54.9	379	44
		1000	538	89.0	614	35.6	245	49
		1200	649	84.2	581	35.4	244	54
		1400	760	67.1	463	34.4	237	53
		1600	871	44.9	310	28.1	194	59
		1800	982	25.6	177	13.2	91	66
		2000	1093	14.0	97	6.3	43	60

* Strain rate was 0.005-inch/inch/minute to 0.2% yield point and 0.5-inch/inch/minute to failure.

Average Effect of Cryogenic Temperatures on Tensile Properties

Form	Condition	Test Temperature		Ultimate Tensile Strength		Yield Strength at 0.2% Offset		Elongation in 2 in. (50.8 mm)
		°F	°C	Ksi	MPa	Ksi	MPa	%
Plate	Heat-treated at 2150°F (1177°C), Rapid Cooled	-321	-196	150.2	1036	-	-	46
		-108	-78	118.8	819	-	-	51
		72	22	104.5	721	47.0	324	46

Average Short-Time Tensile Data, Cold-Reduced and Welded 0.109 in. (2.8mm) Sheet

Condition	Form	Ultimate Tensile Strength		Yield Strength at 0.2% Offset	
		Ksi	MPa	Ksi	MPa
As Cold-Reduced	Reduced 5 percent	123.0	848	82.0	565
	Reduced 15 percent	137.0	945	106.0	731
	Reduced 30 percent	161.0	1110	137.0	945
Cold-Reduced and Welded,	Reduced 5 percent	114.9	792	68.0	469
	Reduced 15 percent	113.1	780	72.1	497
As-Welded	Reduced 30 percent	112.9	778	69.9	482

NOTE: All cold-reduced sheet and the various weld samples were produced from material which had been solution heat-treated prior to cold reduction or welding. All data were obtained at room temperature and are the result of a limited number of tests.

Average Short-Time Tensile Data, Weldments

Condition	Weld Method	Material	Ultimate Tensile Strength		Yield Strength at 0.2% Offset		Elongation in 2 in. (50.8 mm)
			Ksi	MPa	Ksi	MPa	%
As-Welded	Shielded Metal Arc (covered electrodes)	Sheet, 0.125 in. (3.2mm)	110.2	760	55.2	381	26
		Plate, 0.250 in. (6.4mm)	109.8	757	56.7	391	26
		Plate, 0.375 in. (9.5mm)	110.2	760	55.4	382	26
As-Welded	Gas Tungsten Arc (TIG)	Sheet, 0.125 in. (3.2mm)	110.2	759	59.1	407	26
		Plate, 0.250 in. (6.4mm)	107.1	738	53.1	365	25
		Plate, 0.375 in. (9.5mm)	107.6	742	54.9	379	22
As-Welded	Gas Metal Arc (MIG)	Sheet, 0.125 in. (3.2mm)	103.7	715	53.1	366	22
		Plate, 0.250 in. (6.4mm)	110.8	764	55.0	379	33
		Plate, 0.375 in. (9.5mm)	106.4	734	57.0	393	24

Average Aged Tensile Data, Room Temperature*

Form	Aging Temperature		Aging Time, Hours	Ultimate Tensile Strength		Yield Strength at 0.2% Offset		Elongation in 2 in. (50.8 mm)	
	°F	°C		Ksi	MPa	Ksi	MPa	%	
Sheet, 0.125 in. (3.2mm) thick	SHT		-	114.3	788	55.2	381	57	
	1200	649	1000	125.0	862	61.0	421	35	
			4000	143.8	991	76.2	525	19	
			8000	147.9	1020	78.6	542	19	
			16000	148.0	1020	78.1	538	15	
	1400	760	1000	137.0	945	65.3	450	23	
			4000	134.6	928	64.3	443	18	
			8000	131.0	903	61.3	423	19	
			16000	126.1	869	59.3	409	17	
	1600	871	1000	123.0	848	53.2	369	26	
			4000	117.9	813	49.3	340	29	
			8000	115.0	793	48.2	332	30	
			16000	111.1	766	46.1	318	29	
	Plate, 1/2 in. (12.7mm) thick	SHT		-	109.9	758	49.5	341	47
		1200	649	1000	121.4	837	56.5	390	33
				4000	142.5	983	73.4	506	18
8000				143.6	990	73.0	503	18	
1400		760	1000	129.4	892	56.9	392	23	
			4000	129.9	896	56.9	392	21	
			8000	129.2	891	56.3	388	20	
1600		871	1000	119.0	820	47.6	328	31	
			4000	116.7	805	44.9	310	28	
			8000	113.7	784	43.9	303	26	
				16000	109.0	752	42.7	294	26

* Test data for each form are from a single heat.
SHT=Solution heat-treated (not aged)

Average Welded and Aged Tensile Data, Room Temperature*

Form	Aging Temperature		Aging Time, Hours	Ultimate Tensile Strength		Yield Strength at 0.2% Offset		Elongation in 2 in. (50.8 mm) %	Reduction of area %
	°F	°C		Ksi	MPa	Ksi	MPa		
Plate, 1/2 in. (12.7mm) thick	1600	871	8000	109.0	752	47.9	330	-	22
Gas Tungsten Arc Welded Plate, 1/2 in. (12.7mm) thick	1200	649	1000	126.9	875	66.0	455	-	33
			4000	150.1	1035	86.5	596	-	19
			8000	145.5	1003	82.9	572	-	18
	1400	760	1000	128.2	884	58.2	401	-	19
			4000	127.4	878	62.3	430	-	18
			8000	125.2	863	62.3	430	-	15
	1600	871	4000	105.3	726	49.7	343	-	15
			8000	98.0	676	46.9	323	-	16
	All Weld Metal**	1200	649	1000	123.0	848	87.5	603	4
4000				139.3	960	86.0	593	7	8
8000				131.8	909	86.8	598	6	9
1400		760	1000	113.5	783	62.7	432	10	12
			4000	110.5	762	60.6	418	7	6
			8000	97.7	674	59.8	412	4	7
1600		871	1000	92.8	640	48.3	330	8	9
			8000	92.7	639	46.3	319	13	11

* Test data for each form are from a single heat.

** Single test data. Gas tungsten arc welded.

TYPICAL PHYSICAL PROPERTIES

	Temperature, °F	British Units	Temperature, °C	Metric Units
Density	72	0.297 lb/in ³	22	8.22 g/cm ³
Melting Range	2300-2470		1260-1355	
Electrical Resistivity	72	46.6 microhm-in. (712 ohms per cir. mil-ft.)	22	1.18 microhm-cm
Thermal Conductivity	70	63 Btu-in./ft. ² hr.-°F	21	9.1 W/m-K
	200	76 Btu-in./ft. ² hr.-°F	93	11.0 W/m-K
	500	98 Btu-in./ft. ² hr.-°F	200	14.1 W/m-K
	1100	144 Btu-in./ft. ² hr.-°F	593	20.8 W/m-K
	1300	159 Btu-in./ft. ² hr.-°F	704	22.9 W/m-K
	1500	174 Btu-in./ft. ² hr.-°F	816	25.1 W/m-K
	1700	189 Btu-in./ft. ² hr.-°F	927	27.2 W/m-K
Specific Heat	Room	0.116 Btu/lb.-°F	Room	486 J/Kg-K
	200	0.117 Btu/lb.-°F	93	490 J/Kg-K
	400	0.118 Btu/lb.-°F	204	494 J/Kg-K
	600	0.119 Btu/lb.-°F	316	498 J/Kg-K
	800	0.123 Btu/lb.-°F	427	515 J/Kg-K
	1000	0.130 Btu/lb.-°F	538	544 J/Kg-K
	1200	0.139 Btu/lb.-°F	649	582 J/Kg-K
	1400	0.151 Btu/lb.-°F	760	632 J/Kg-K
	1600	0.167 Btu/lb.-°F	871	699 J/Kg-K
	1800	0.186 Btu/lb.-°F	982	799 J/Kg-K
	2000	0.205 Btu/lb.-°F	1093	858 J/Kg-K
Mean Coefficient of Thermal Expansion	79-200	7.7 microinches/in.-°F	26-93	13.9 10 ⁻⁶ m/m-°C
	79-1000	8.4 microinches/in.-°F	26-538	15.1 10 ⁻⁶ m/m-°C
	79-1200	8.6 microinches/in.-°F	26-649	15.5 10 ⁻⁶ m/m-°C
	79-1350	8.8 microinches/in.-°F	26-732	15.8 10 ⁻⁶ m/m-°C
	79-1500	8.9 microinches/in.-°F	26-816	16.0 10 ⁻⁶ m/m-°C
	79-1650	9.1 microinches/in.-°F	26-899	16.4 10 ⁻⁶ m/m-°C
	79-1800	9.2 microinches/in.-°F	26-982	16.6 10 ⁻⁶ m/m-°C
Poisson's Ratio	-108	0.328	-78	0.328
	72	0.320	22	0.320
Magnetic Permeability	Room		1.002 at 200 oersteds (15,900 A/m)	

Dynamic Modulus of Elasticity, Plate

Condition	Dynamic Modulus of Elasticity,		Dynamic Modulus of Elasticity,	
	Temperature, °F	10 ⁶ psi	Temperature, °C	GPa
Heat-treated at 2150°F (1177°C) Rapid Cooled	Room	29.8	Room	205
	200	29.4	93	203
	400	28.6	204	197
	600	27.8	316	192
	800	26.7	427	184
	1000	25.8	538	178
	1200	24.7	649	170
	1400	23.3	760	161
	1600	22.2	871	153
	1800	20.4	982	141

Average Hardness, Room Temperature

Form	Condition	Average Hardness, Rockwell B
Sheet, 0.012 to 0.090 in. (0.30 to 2.3mm) thick	Heat Treated at 2150°F (1177°C), Rapid Cooled	87*
Sheet, 0.091 to 0.312 in. (2.3 to 7.8mm) thick	Heat-treated at 2150°F (1177°C), Rapid Cooled	92*
Plate, 3/8 to 2 in. (9.5 to 50.8mm) thick	Heat-treated at 2150°F (1177°C), Rapid Cooled	89*

* Based on 58-65 tests

Average Hardness, Welded Sheet

Weld Method	Test Area	Average Hardness, Rockwell B
Shielded Metal Arc (covered electrodes)	Weld area	92
	Heat-affected zone	93
	Base metal	91
Gas Tungsten Arc (TIG)	Weld area	89
	Heat-affected zone	93
	Base metal	91
Gas Metal Arc (MIG)	Weld area	90
	Heat-affected zone	93
	Base metal	91

Note: Sheet was solution heat-treated prior to welding. Hardness was determined at room temperature in the as-welded condition.

Aged Hardness, Room Temperature*

Form	Aging Temperature		Aging Time, Hours	Hardness, Rockwell A	
	°F	°C			
Sheet	SHT		-	54	
	1200	649	1000	56	
			4000	62	
			8000	63	
	1400	760	1000	62	
			4000	61	
			8000	60	
	1600	871	1000	61	
			4000	58	
			8000	55	
	Plate	SHT		-	54
		1200	649	1000	57
4000				62	
8000				63	
1400		760	1000	60	
			4000	59	
			8000	58	
1600		871	1000	56	
			4000	56	
			8000	54	
All Weld Metal**		1200	649	1000	64
				4000	65
	8000			63	
	1400	760	1000	62	
			4000	60	
			8000	60	
	1600	871	1000	56	
			4000	55	
			8000	54	

SHT=Solution heat-treated (not aged)

* Single tests from a single heat for each form

**Gas tungsten arc welded

Formability, Sheet

Condition	Typical Olsen cup depth,	
	in.	mm
Heat Treated at 2150°F (1177°C), Rapid Cooled	0.48	12.3

Average Impact Strength, Plate

Condition	Test Temperature		Average Charpy V-Notch Impact Strength	
	°F	°C	Ft. lb.	Joules
	Heat-treated at 2150°F (1177°C) Rapid Cooled	-321	-196	37
	-216	-157	44	60
	-108	-78	51	69
	-20	-29	56	76
	Room		54	73
	1500	815	58	79

Average Impact Strength, Aged Plate*

Aging Temperature		Aging Time, Hours	Average Charpy V-Notch Impact Strength	
°F	°C		ft.-lb.	Joules
SHT		-	95	129
1200	649	1000	24	33
		4000	12	16
		8000	15	20
1400	760	1000	10	14
		4000	10	14
		8000	8	11
1600	871	1000	15	20
		4000	12	16
		8000	15	20
		16000	12	16

SHT=Solution heat-treated (not aged)

* Average of four tests on 1/2-in. (12.7mm) plate from a single heat.

OXIDATION RESISTANCE

Comparative Static Oxidation Data in Flowing Air for 1008 Hours*

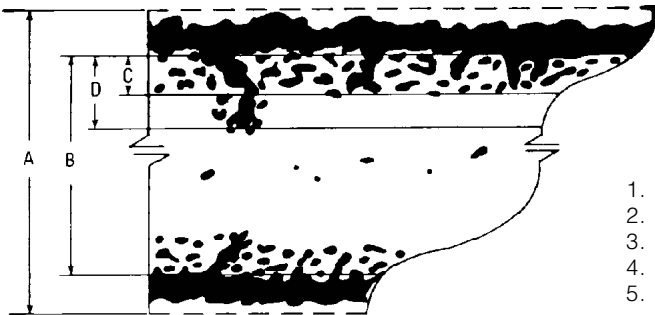
Alloy	1800°F (980°C)				2000°F (1095°C)			
	Metal Loss/side,		Metal Loss +		Metal Loss/side,		Metal Loss +	
	Mils	µm	Mils	µm	Mils	µm	Mils	µm
HASTELLOY® X alloy	0.29	0.007	0.74	0.019	1.5	0.038	2.7	0.069
INCONEL® alloy 600	0.32	0.008	0.90	0.023	1.1	0.028	1.6	0.041
INCONEL alloy 601	0.53	0.013	1.3	0.033	1.2	0.031	2.6	0.06
Alloy 625	0.32	0.008	0.72	0.018	3.3	0.083	4.8	0.12
Alloy 800H	0.94	0.024	1.8	0.046	5.4	0.137	7.4	0.19

* Cycled to room temperature once a week

**CIP=Continuous Internal Penetration

INCONEL is a trademark of Inco Family of Companies

Schematic Representation of Metallographic Technique used for Evaluating Oxidation Tests



1. Metal Loss = (A-B)/2
2. Average Internal Penetration = C
3. Maximum Internal Penetration = D
4. Average Metal Affected = ((A-B)/2) + C
5. Maximum Metal Affected = ((A-B)/2) + D

Comparative Average Hot Corrosion Resistance*

Test Temperature	Test Period, Hours	Total Metal Affected/side, Mils (mm)					
		HASTELLOY® X alloy		HASTELLOY S alloy		HAYNES® 188 alloy	
°F	°C	Mils	mm	Mils	mm	Mils	mm
1650	900	3.0	0.8	2.7	0.07	2.1	0.05
1650	900	6.8	0.17	7.5	0.19	3.7	0.09

* All tests performed by exposure to the combustion products of No. 2 fuel oil (0.4 percent sulfur) and 5 ppm of sea salt. Gas velocity over samples was 13 ft./sec. (4m/s). Thermal shock frequency was one/hour.

CARBURIZATION RESISTANCE

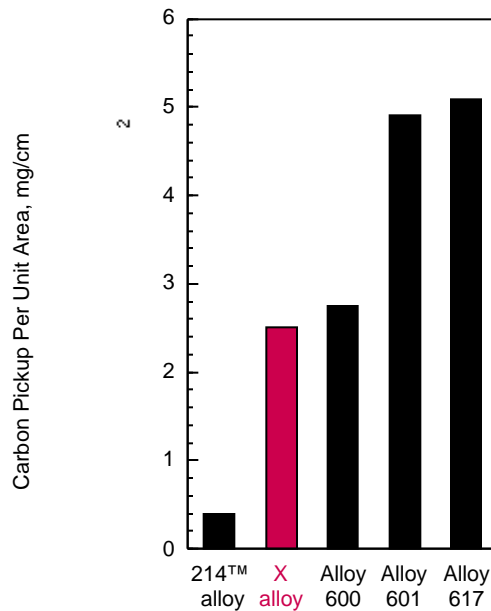
Tests were performed in a carburizing environment with an inlet gas mixture (volume %) of 5.0% H₂, 5.0% CO, 5.0% CH₄ and the balance argon. The calculated oxygen potential and carbon activity at 1800°F (980°C) were

9×10^{-22} atm. and 1.0, respectively.

The results are presented in terms of the mass of carbon pickup per unit area, which was obtained from the equation $M = C (W/A)$ where M = the mass

of carbon pickup per unit area (mg/cm²), C = difference in carbon (weight fraction) before and after exposure, W = weight of the unexposed specimen (mg) and A = surface area of the specimen exposed to the test environment (cm²).

Comparative Carburization Resistance at 1800°F (980°C) for 55 Hours



HEALTH AND SAFETY INFORMATION

Welding can be a safe occupation. Those in the welding industry, however, should be aware of the potential hazards associated with welding fumes, gases, radiation, electric shock, heat, eye injuries, burns, etc. Also, local, municipal, state, and federal regulations (such as those issued by OSHA) relative to welding and cutting processes should be considered.

Nickel-, cobalt, and iron-base alloy products may contain, in varying concentrations, the following elemental constituents; aluminum, cobalt, chromium, copper, iron, manganese, molybdenum,

nickel and tungsten. For specific concentrations of these and other elements present, refer to the Material Safety Data Sheets (MSDS) available from Haynes International, Inc.

Inhalation of metal dust or fumes generated from welding, cutting, grinding, melting, or dross handling of these alloys may cause adverse health effects such as reduced lung function, nasal and mucous membrane irritation. Exposure to dust or fumes which may be generated in working with these alloys may also cause eye irritation, skin rash and effects on other organ systems.

The operation and maintenance of welding and cutting equipment should conform to the provisions of American National Standard (ANSI/AWS Z49.1, "Safety in Welding and Cutting". Attention is especially called to Section 4 (Protection of Personnel) and 5 (Health Protection and Ventilation) of ANSI/AWS Z49.1. Mechanical ventilation is advisable and, under certain conditions such as a very confined space, is necessary during welding or cutting operations, or both, to prevent possible exposure to hazardous fumes, gases, or dust that may occur.

STANDARD PRODUCTS

By Brand or Alloy Designation:

HAYNES

International

HASTELLOY® Family of Corrosion-Resistant Alloys

B-2, B-3®, C-4, C-22®, C-276, C-2000®, D-205™, G-3, G-30®, G-50® and N

HASTELLOY Family of Heat-Resistant Alloys

S, W, and X

HAYNES® Family of Heat-Resistant Alloys

25, R-41, 75, HR-120®, 150, HR-160®, 188, 214™, 230®, 230-W™, 242™, 263, 556™, 625, 718, X-750, MULTIMET® and WASPALOY

Corrosion-Wear Resistant Alloy

ULTIMET®

Wear-Resistant Alloy

6B

HAYNES Titanium Alloy Tubular

Ti-3Al-2.5V

Standard Forms:

Bar, Billet, Plate, Sheet, Strip, Coils, Seamless or Welded Pipe & Tubing, Pipe Fittings, Flanges, Fittings, Welding Wire and Coated Electrodes

Properties Data:

The data and information in this publication are based on work conducted principally by Haynes International, Inc. and occasionally supplemented by information from the open literature, and are believed to be reliable. However, we do not make any warranty or assume any legal liability or responsibility for its accuracy, completeness or usefulness, nor do we represent that its use would not infringe upon

private rights. Any suggestions as to uses and applications for specific alloys are opinions only and Haynes International, Inc. makes no warranty of results to be obtained in any particular situation. For specific concentrations of elements present in a particular product and a discussion of the potential health effects thereof, refer to the Material Safety Data Sheet supplied by Haynes International, Inc.

For More Information Contact:

Kokomo, Indiana 46904-9013

1020 W. Park Avenue
P.O. Box 9013
Tel: 765-456-6012
800-354-0806
FAX: 765-456-6905

Anaheim, California 92806

Stadium Plaza
1520 South Sinclair Street
Tel: 714-978-1775
800-531-0285
FAX: 714-978-1743

Arcadia, Louisiana 71001-9701

3786 Second Street
Tel: 318-263-9571
800-648-8823
FAX: 318-263-8088

Windsor, Connecticut 06095

430 Hayden Station Road
Tel: 860-688-7771
800-426-1963
FAX: 860-688-5550

Houston, Texas 77041

The Northwood Industrial Park
12241 FM 529
Tel: 713-937-7597
800-231-4548
FAX: 713-937-4596

England

Haynes International, Ltd.
P.O. Box 10
Parkhouse Street
Openshaw
Manchester, M11 2ER
Tel: 44-161-230-7777
FAX: 44-161-223-2412

France

Haynes International, S.A.R.L.
ZI des Bethunes
10 rue de Picardie
95310 Saint-Ouen L'Aumone
Tel: 33-1-34-48-3100
FAX: 33-1-30-37-8022

Italy

Haynes International, S.R.L.
Viale Brianza, 8
20127 Milano
Tel: 39-2-2614-1331
FAX: 39-2-282-8273

Switzerland

Nickel Contor AG
Hohlstrasse 534
CH-8048 Zurich
Tel: 41-1-434-7080
FAX: 41-1-431-8787